

## **SECTION 1.2 SCREEN MAGNIFICATION ZOOMTEXT 8.0**

### **Introduction**

This section will concentrate on the features of the screen magnification program ZoomText; a Magnifier/Screen reader software application for students who require magnification to access e-text resources.

### **Description of student need**

- Student has vision loss requiring enlargement of text materials.
- Student needs access to curriculum materials.
- Student requires magnification of items on computer screen for access to e-text.
- Student may also benefit from screen reader with speech output capabilities.

### **Prerequisites**

- Student has basic computer, word processing and Internet skills.
- Student is able to use keyboard commands or ZoomText “Hotkeys”.
- Student can learn to orient herself, within a magnified environment, using context and the features of ZoomText.

### **Classroom strategies**

- Use technology resources such as the Internet and email for instruction, providing accessible e-text through ZoomText.
- Teach and review ZoomText keyboard commands to provide efficient use of magnification and screen-reading.

### **Challenges**

ZoomText can provide access to e-text for students who have low-vision. Students may require alternative technology solutions, including screen-reading software such as JAWS.

### **Team support needed to implement technology**

- Team members will customize the software for the student’s vision needs, and teach the student how to do this.
- Team members must be familiar with essential keyboard commands in order to teach and model use of these commands.

## Resources

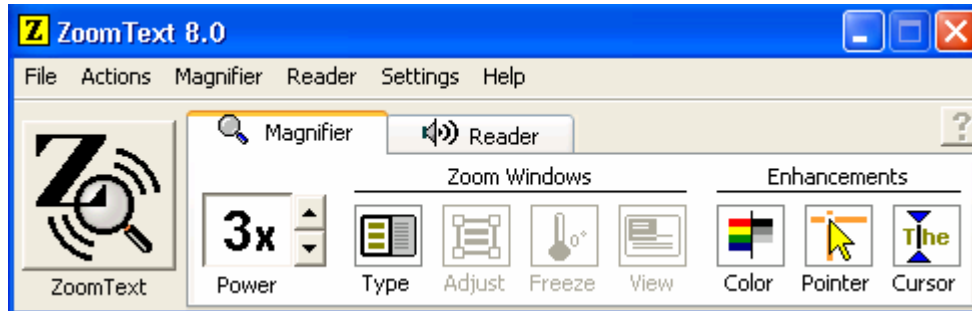
Go to [www.aisquared.com](http://www.aisquared.com) to download a full-version 30-day trial of ZoomText. You can also request to have a CD version mailed to you.

## Information and Instructions for ZoomText 8.0

### Magnification

ZoomText provides a magnified view of the computer screen. As the student moves the mouse, types text and navigates through applications, the area of activity is kept in view by ZoomText.

The ZoomText toolbar shows the magnification features.



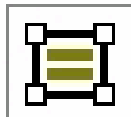
The Magnifier toolbar



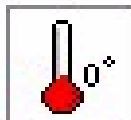
**Power** Sets the magnification level from 1x to 16x.



**Type** Sets the zoom window type: Full, Overlay, Lens or Docked. Each of these windows offers a unique way of viewing what's on the screen, accommodating different tasks and application environments.



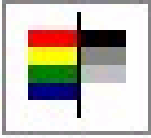
**Adjust** Sizes or moves a zoom window. To size a window, drag any handle. To move a window, drag inside the window frame. Right click to exit the tool. Note: The Full zoom window cannot be sized or moved.



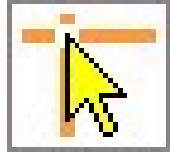
**Freeze** Freezes a portion of the full-zoom window. The Freeze window allows you to monitor one area of your application while simultaneously viewing and working in other areas.



**View** Shows you the area of the screen that's currently being magnified (in a 1x view), and allows you to select a new area to zoom in on.



**Colour** Selects colour enhancement settings. Colour enhancements improve screen clarity for easier viewing and reduced eyestrain. You can choose from a variety of preset colour schemes or configure your own custom colour settings.



**Pointer** Selects mouse pointer enhancement settings. Pointer enhancements make it easy to locate and follow the mouse pointer. You can choose from a variety of preset pointer enhancement schemes or configure your own custom pointer enhancements.



**Cursor** Select cursor enhancement settings. Cursor enhancements make it easier to locate and follow the text cursor. You can choose from a variety of preset cursor enhancement schemes or configure your own custom cursor enhancements.

View the **narrated screen demonstrations** in the related materials on your ALT-VI resource cd. Narrated screen demonstration files have been created to demonstrate the following ZoomText features:

- Magnification Options
- Speech Output Options
  - Application Reader
  - Document Reader
- Echo Settings
  - Typing Echo
  - Mouse Echo
  - Program Echo

### **Speech Output**

Two formats for accessing e-text with speech output in ZoomText are:

#### **1. AppReader**

AppReader reads documents, web pages and email, within the parent application. When entering and exiting AppReader the view of the document does not change. Magnification settings remain the same as previously programmed, or can be changed while in AppReader.

AppReader can be set to automatically read through the entire document, or the student can manually read by word, line, sentence or paragraph. As reading occurs, each spoken word is highlighted. AppReader settings allow the student to customize the appearance of word highlighting, including the highlight shape, size, colour and transparency level.

- To start and operate AppReader
  - Launch ZoomText or ensure that ZoomText is running.
  - Open the document, web page or email that you wish to read.
  - On the Reader toolbar, select **AppRdr**.

AppReader begins reading from the current text cursor position. If a text cursor does not exist, AppReader starts paused with the first word on the page highlighted.

Menu: **In ZoomText, go to Actions menu, select Start AppReader.**

Hotkey: ALT + SHIFT + A

**Note:** The AppReader button and Action menu item are disabled (greyed out) when the last active application does not contain readable text.

- To start and stop automatic reading, press ENTER or click the mouse.

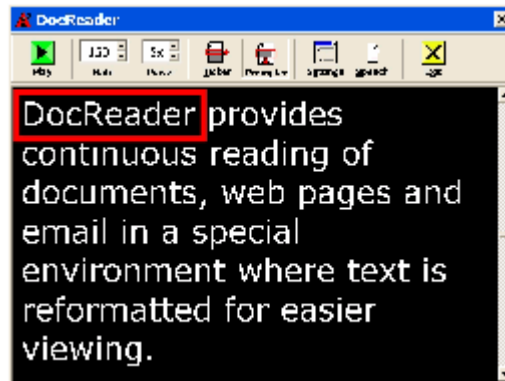
When using the mouse, you can resume reading from a new location by clicking on the word where you wish to read.

## 2. DocReader

DocReader reads documents, web pages and email, in a special environment where text is reformatted for easier viewing. Text is presented in a ticker tape or teleprompter format, with a choice of fonts, colours, word highlighting, and magnification level.

DocReader can automatically read through an entire document, or the student can manually read by word, line, sentence or paragraph. As reading occurs, each spoken word is highlighted.

The DocReader screen occupies the entire display with a toolbar at the top of the screen and the document text below it. The document text is formatted and displayed according to the current DocReader settings.



- To start and operate DocReader



- Launch ZoomText or ensure that ZoomText is running.
- Open the document, web page or email that you wish to read.
- On ZoomText's Reader toolbar, select **DocRdr**.

The DocReader screen appears with text from the source document. If the source document contains an active text cursor, the word at the cursor position is highlighted in the DocReader display. Otherwise, the first word in the DocReader display is highlighted.

Menu: **In ZoomText, go to Actions menu, select Start DocReader.**

Hotkey: ALT + SHIFT + D

**Note:** The DocReader button and Action menu item are disabled (greyed out) when the last active application does not contain readable text.

- To start and stop reading, click the **Play/Pause** button or press ENTER.
- While paused, click any word to set a new location to read from.
- Keyboard commands are available for reading by word, line, sentence or paragraph.
- Press the spacebar to hear a word spelled out letter.
- To exit DocReader, right-click or press ESC.

When DocReader exits, the text cursor is automatically positioned at the last word that was highlighted in DocReader (if a cursor exists).

**Other ZoomText features that provide speech output are:**

### 3. SpeakIt tool

The SpeakIt tool allows you to read selected areas of the screen by clicking or dragging with the mouse. Any text that is visible on the screen can be spoken, even if it is outside the active program. Note: Text that appears in graphical images cannot be spoken.

- To use the SpeakIt tool



1. On the Reader toolbar, select the **SpeakIt Tool**.

Menu: **In ZoomText, go to Actions menu, select SpeakIT Tool.**

Hotkey: ALT + SHIFT + I

2. To speak a single word, click on the word.
3. To speak a block of text, drag to highlight the text.

Upon release of the mouse button, all highlighted text will be spoken.

4. To exit the SpeakIt tool, right-click or press ESC.

**Note:** The SpeakIt tool can be used when speech is disabled.

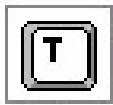
### **Echo Settings**

Echo settings control how ZoomText speaks as the student types, use the mouse, and navigates applications. These settings include:

#### **Typing Echo**

Typing echo allows you to hear the keys and words that you type. You can choose to have individual keys, words, or both keys and words spoken. Typed words are spoken upon completion (as soon as you type a space or punctuation character). Additional typing echo options also allow you to select which keys are spoken – all keys or selected groups of keys.

- To enable typing echo



On the Reader toolbar, select **Typing**, and then select the desired typing echo mode.

**Note:** You can switch typing echo modes using the Typing Echo hotkey: ALT+SHIFT+T.

#### **Mouse Echo**

Mouse echo automatically reads text beneath the pointer. As the pointer is moved across the screen, single words or complete lines of text are echoed instantly or after hovering briefly.

- To enable mouse echo



On the Reader toolbar, select **Mouse**, and then select the desired mouse echo mode.

**Note:** You can switch mouse echo modes using the Mouse Echo hotkey: ALT + SHIFT + M.

### ***Program Echo***

Program echo determines what items are spoken as you navigate and use your applications. These items include: window titles, menus, dialogs, list views and tree views, and text that the cursor moves through. The amount of detail that is spoken for these items can be adjusted using the verbosity settings.

---

A “Related Materials” section is included in this resource book. Please refer to the Related Materials section for a list of narrated screen demonstrations that have been developed for each content section. All narrated screen demonstration files are included on your Accessing Literacy cd, also included with this resource book.